



University of California
San Francisco

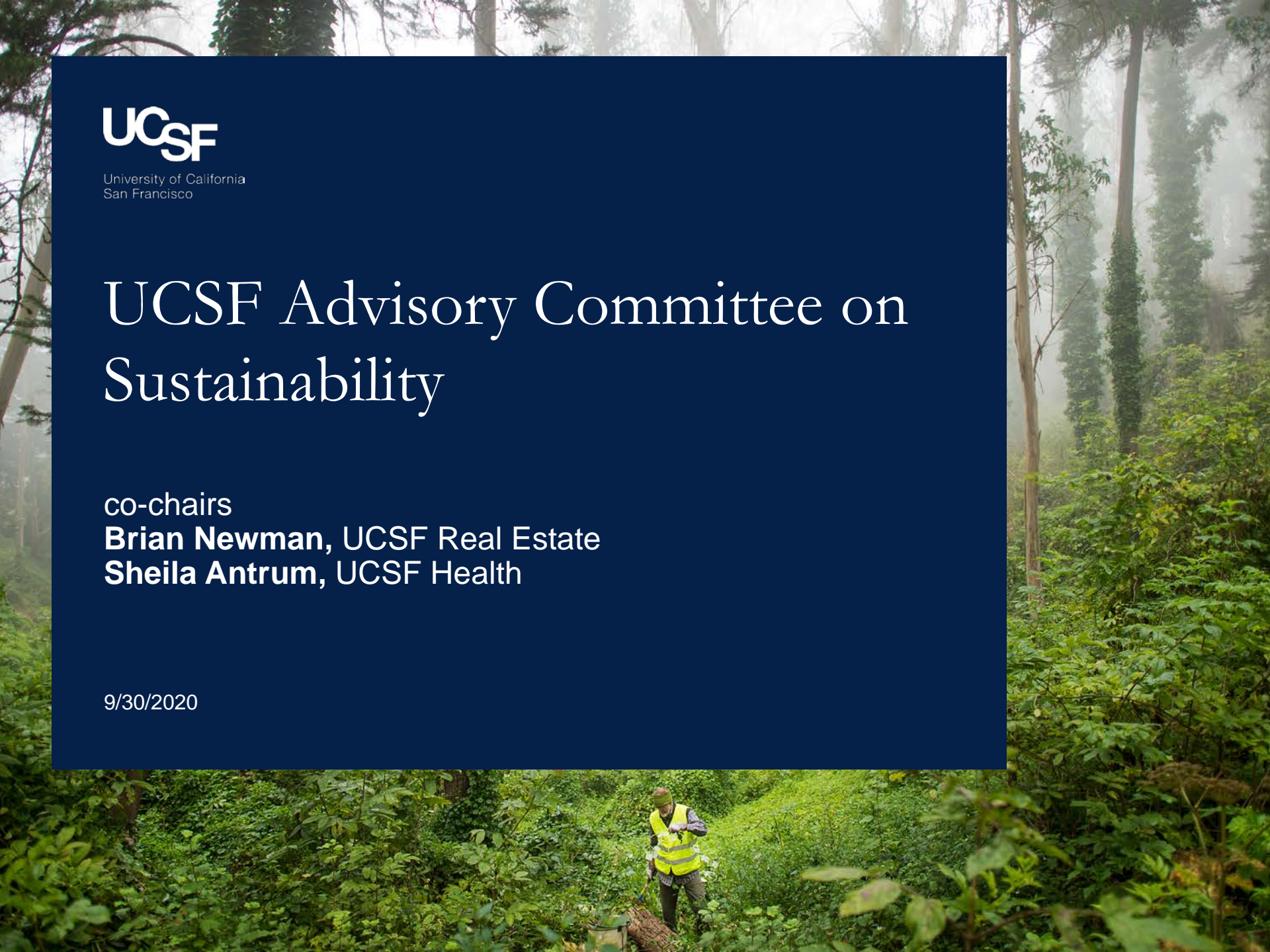
UCSF Advisory Committee on Sustainability

co-chairs

Brian Newman, UCSF Real Estate

Sheila Antrum, UCSF Health

9/30/2020



Agenda

- Introduction and welcome to new members – Brian and Sheila 1:00
- Overview of UCSF Sustainability and Charge – Gail 1:05
- Sub-Committees and roles – Gail 1:10
- Break-out sessions – Gail 1:20
- Sub-committees report back – Brian, Sheila, Dorie, Rowena 2:05
- Brian and Sheila Last Words 2:20

FY20-22 Appointment Cycle

- Regular Meetings are scheduled for
 - September
 - December
 - March
 - June
- Informational updates will be sent in advance
- Group meets for welcome and updates 10 min
- Sub-committee meetings will occur in breakouts the next 45 min
- Regroup in the last 30 min for progress updates

Introductions and Welcome new UACS Members

Bennett Kissel, medical student, Human Health and Climate Change Student Group

Christopher Cadwell, Clinic Manager, School of Dentistry

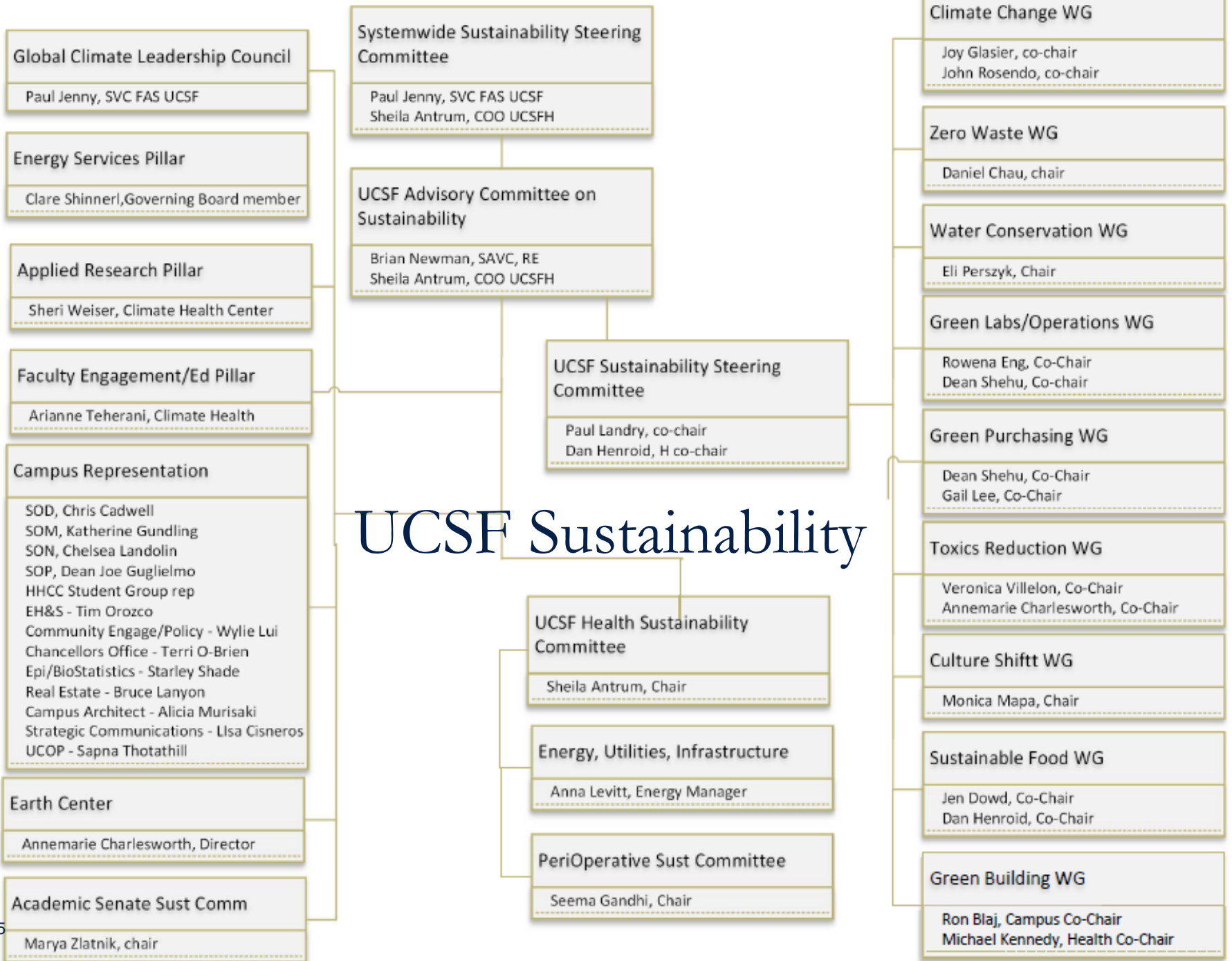
Annemarie Charlesworth, Director of Communications, Earth Center

Tim Orozco, Hazardous Materials Manager, EH&S,

Chelsea Landolin, Assistant Clinical Professor, School of Nursing

Alicia Murasaki, Assistant Vice Chancellor, Campus Planning and Campus Architect

UCSF Sustainability



Charge of the Committee

The overarching charge of the committee for the FY2020-22 appointment is to advise and approve strategies for UCSF to become a national leader in health and sustainability by 2025.

This will be accomplished by not only supporting implementation of UCOP's Sustainable Practices Policies, but socializing sustainability principles across the UCSF community.



Charter: Sub-Committees

In addition, the committee shall be divided into sub-committees to provide guidance and leadership to:

- Explore and advocate for **academic strategies** to incorporate sustainability into the curriculum/practice
- Explore and advocate for **UCSF Health strategies** to incorporate sustainability into the health system
- Explore and advocate for **UCSF buildings & operations** to incorporate sustainability into the campus operations

Academics Sub-Committee

Will focus on the schools to socialize sustainability principles into the UCSF community

Dorie Apollonio, School of Pharmacy, facilitator

Bennett Kissel, Human Health & Climate Change

Annemarie Charlesworth, EaRTH Center

Katherine Gundling, Department of Medicine

Chelsea Landolin, School of Nursing

Starley Shade, Epidemiology & Biostatistics

Arianne Teherani, Medical Education

Sheri Weiser, Climate and Health Center

Marya Zlatnik, Academic Senate Sustainability Committee

Campus Operations Sub-Committee

Will focus on the campus operations/communications to socialize sustainability principles into the UCSF community

Brian Newman, Real Estate, facilitator

Christopher Cadwell, Clinic Manager, School of Dentistry

Tim Orozco, EH&S, Hazardous Materials Manager

Joseph Guglielmo, Dean, School of Pharmacy

Paul Landry, Engineering & Utilities, Campus Facilities

Bruce Lanyon, Real Estate Assets

Patti Mitchell, Real Estate Capital Programs

Alicia Murasaki, Campus Planning and Campus Architect

Health System Operations

Will focus on health system operations/communications to socialize sustainability principles into the UCSF community

Sheila Antrum, UCSFH COO, facilitator

Seema Gandhi, Anesthesia Dept

Dan Henroid, Nutrition and Food Services

Gail Lee, Sustainability Director

Health Sustainability Committee

PeriOp Sustainability Committee

Communications Sub-Committee

Will focus on the campuswide communications to socialize sustainability principles into the UCSF community

Rowena Eng, Facilitator

Wylie Liu, Center for Community Engagement

Terri O'Brien, Associate Chancellor, Chancellor's Office

Sapna Thottathil, University of California Office of the President

Lisa Cisneros, Senior Director, Strategic Communications

Sub-Committees Report Back

- Academics
- Buildings and Operations
- Health
- Communications

Annual Reporting

An annual or biennial report of the Advisory Committee on Sustainability will be submitted to the UCSF community and the Chancellor's Executive Cabinet.

Any recommendations that warrant higher level decisions can be taken to the Chancellor's Executive Cabinet for consideration.

A man wearing a white helmet, a red t-shirt, and khaki shorts is riding a silver bicycle on a paved path. He has a backpack and a water bottle on the bike. The background shows a modern building with large windows and some trees.

Last Words – Brian and Sheila

